

Affordable Network Capacity



NETGEAR presents a great way to increase your network's capability without breaking your budget: the 16-port JFS516. This 10/100 Fast Ethernet switch provides expanded connectivity for small office networks so users no longer have to compete with each other for bandwidth. All of the essential features – automatic speed and full/half duplex sensing, 200 Mbps throughput per port, Auto Uplink™ – are included, but at an economical price that a value-conscious business owner can't ignore.

Thrifty

The ideal, low-cost solution you've been looking for, the unmanaged JFS516 lets you ramp up your office network to a new power level – affordably.

Capable

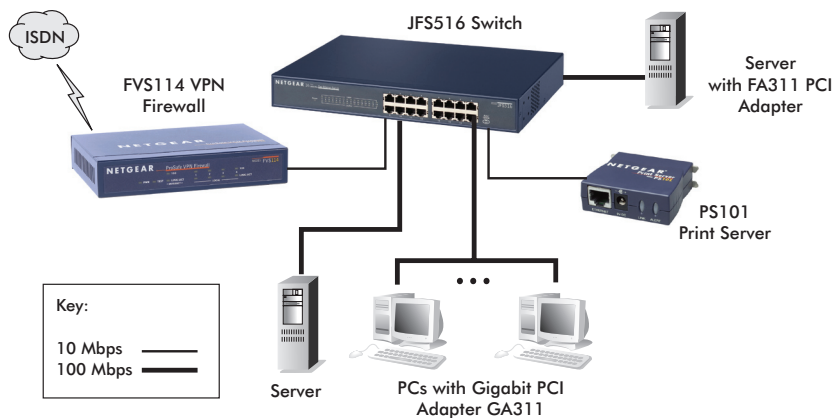
Sixteen switched ports provide private bandwidth for PCs, servers, or hubs, and support 200 Mbps of throughput. Each port delivers 200 Mbps of network speed in full-duplex mode.

Perceptive

As soon as it's powered on, it begins operating. Every port automatically senses the proper speed and full/half duplex mode, and Auto Uplink adjusts for straight-through or crossover cables to make the right link.

Practical

This high-performance switch makes it easy to combine 10 and 100 Mbps devices within your network. As an added convenience, these sturdy metal units can be mounted in a standard 19-inch rack.



Technical Specifications**• Network Ports**

- 16 10 or 100 Mbps RJ-45 ports
- Performance (64 byte packets)
- Store-and-forward packet switching
- Forward rate (10 Mbps)
14,800 packet per sec.
- Forward rate (100 Mbps)
148,000 packet per sec.
- Latency (10 to 100 Mbps) 20 usec max
- MAC addresses 4,000
- Queue buffer KBytes 320

• Physical Specifications

- Dimensions (h x w x d):
43 x 320 x 202 mm
(1.7 x 13 x 8 in)
- Weight: 2.0 kg (4.4 lb)

• AC Power

- 15-W maximum
- Auto-sensing 100 to 240V, 50/60-Hz
- Localized plug for North America,
Japan, UK, Europe, Australia

• Standards Compliance

- IEEE 802.3i 10BASE-T Ethernet
- IEEE 802.3u 100BASE-TX Fast Ethernet
- Compatible with all major
network software

• Status LEDs

- Unit: Power
- Per network port: 10 or 100 Mbps
operations, Rx/Tx and collision, link,
half/full duplex

• Electromagnetic Emissions

- CE mark, commercial
- FCC Part 15 Class
- EN 55 022 (CISPR22), Class A
- VCCI Class A
- C-Tick
- MIC

• Environmental Specifications

- Operating temperature: 0° to 40° C
- Operating humidity: 80% max. relative
humidity, non-condensing

• Safety Agency Approvals

- UL listed (UL 1950)/CUL

Warranty

- NETGEAR Lifetime Warranty†

ProSupport™ Service Packs Available**• On Call 24 x 7**

- PMB0331-100 (US)
- PMB0331 (non-US)

• Xpress HW

- PRR0331

Package Contents

- ProSafe 16-Port 10/100 Fast Ethernet
Switch (JFS516)
- Power cord
- Rack-mount kit
- User guide
- Warranty card
- Support card

Ordering Information

- North America: JFS516NA
- Europe - General: JFS516GE
- Europe - UK: JFS516UK
- Asia: JFS516AU
- Japan: JFS516JP

NETGEAR®

4500 Great America Parkway
Santa Clara, CA 95054 USA
1-888-NETGEAR (638-4327)
E-mail: info@NETGEAR.com
www.NETGEAR.com

© 2007 NETGEAR, Inc. NETGEAR, the NETGEAR logo, Connect with Innovation, Everybody's connecting, the Gear Guy logo, IntelliFi, ProSafe, RangeMax and Smart Wizard are trademarks or registered trademarks of NETGEAR, Inc. in the United States and/or other countries. Microsoft, Windows, and the Windows logo are trademarks or registered trademarks of Microsoft Corporation in the United States and/or other countries. Other brand and product names are trademarks or registered trademarks of their respective holders. Information is subject to change without notice. All rights reserved.

*Free basic installation support provided for 90 days from date of purchase. Advanced product features and configurations are not included in free basic installation support; optional premium support available.

†Lifetime warranty for product purchased after 05/01/2007. For product purchased before 05/01/2007, warranty is 2 years.