



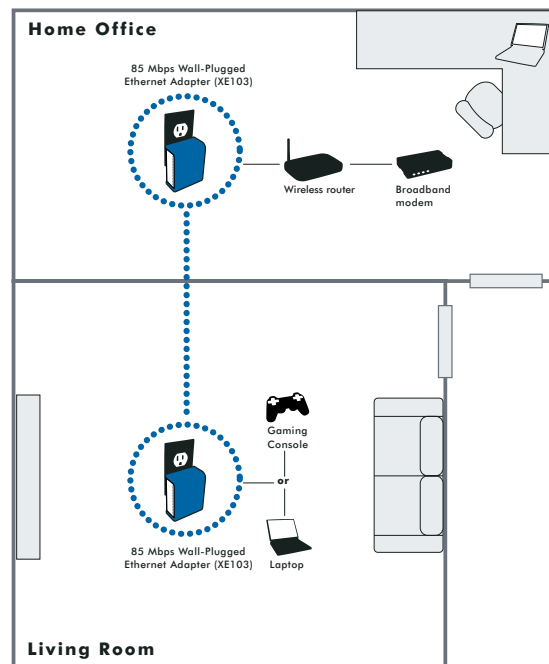
## Extend Your Network Using Electrical Outlets

- Turns any outlet into an Ethernet network connection
- Delivers 85 Mbps speed
- Simple plug and play installation

### Features

- Extends your network using existing electrical outlets
- No software to install
- Simply plug one XE103 into your router and a second XE103 into any Ethernet-ready device
- Connect a desktop, notebook PC, gaming console, NETGEAR Storage Central (SC101) Slingbox,<sup>™</sup> a DVR, or NETGEAR Print Server (PS121)
- Supports Windows<sup>®</sup> Vista<sup>™</sup>

### Plug-and-play connection of a Powerline HD Network<sup>1</sup>



<sup>1</sup>XE103 is compatible with NETGEAR's XE102 and WGXB102 products. XE103 is not compatible nor interoperable with NETGEAR's HDX101, however it may coexist on the same network.

Outlets must be electrically connected in order for Powerline devices to provide a network connection between them.

**24/7**  
TECHNICAL  
SUPPORT<sup>®</sup>

1-888-NETGEAR (638-4327)  
Email: [info@NETGEAR.com](mailto:info@NETGEAR.com)

NETGEAR's 85 Mbps Powerline Ethernet Adapter (XE103) is the fast solution for extending your home network by using standard electrical outlets. It delivers everything you need to set up an Internet connection in any room without running new wires. Once it is inserted into the wall outlet, simply plug one XE103 into your router and another XE103 into any Ethernet-ready device. For instance, you can use its 10/100 Ethernet port to connect a desktop or notebook PC, a gaming console, NETGEAR's SC101 Storage Central, a Slingbox™, a DVR or NETGEAR's PS121 USB Print Server. You eliminate dead spots in your wireless network, while enjoying a fast 85 Mbps speed capable of transmitting multiple video streams at once and without interruption. With no software to install, setup is literally a matter of Plug and Play.

#### System Requirements

- For device connection: Available RJ-45 Ethernet port
- To enable encryption: Microsoft® Windows® Vista™ 2000 and XP

#### Network Ports

- One 10/100 Mbps Ethernet port
- One 85 Mbps Powerline port

#### Power Supply

- 100-240V@50-60HZ

#### LEDs

- Unit: Power
- PowerLine: Link
- Ethernet: Link/Activity

#### Environmental Specifications

- Operating temperature: 0-40 °C (32-104 °F)
- Operating relative humidity: 10% to 90% non-condensing

#### Electromagnetic Emissions

- FCC Part 15 Class B

#### Power and Safety Regulations

- UL Certified

#### Typical Coverage

- Up to 5000 square foot home

#### Warranty

- (see information enclosed)

#### Package Contents

- 85 Mbps Powerline Ethernet Adapter (XE103)
- Ethernet Cable
- Installation guide
- Setup CD
- Warranty/Support information card

#### NETGEAR Related Products

- Network:
  - Super-G Wireless Router (WGT624)
  - Wireless-G Router (WGR614)
  - Web Safe 4-port Router (RP614v4)
  - 14 Mbps Wireless Range Extender Kit (XE102)
  - 14 Mbps Powerline Ethernet Adapter (XE104)
- USB Print Server (PS121)
- Storage Central (SC101)
- Digital Entertainer (EVA700)

# NETGEAR®

4500 Great America Parkway  
Santa Clara, CA 95054 USA  
1-888-NETGEAR (638-4327)  
E-mail: info@NETGEAR.com  
www.NETGEAR.com

© 2007 NETGEAR, Inc. NETGEAR, the NETGEAR logo, Connect with Innovation, Everybody's connecting, the Gear Guy logo, IntelliFi, ProSafe, RangeMax and Smart Wizard are trademarks or registered trademarks of NETGEAR, Inc. in the United States and/or other countries. Microsoft, Windows, and the Windows logo are trademarks or registered trademarks of Microsoft Corporation in the United States and/or other countries. Other brand and product names are trademarks or registered trademarks of their respective holders. Information is subject to change without notice. All rights reserved.

\*Free basic installation support provided for 90 days from date of purchase. Advanced product features and configurations are not included in free basic installation support; optional premium support available.

\*\*Actual performance may vary due to operating conditions

D-XE103-1